

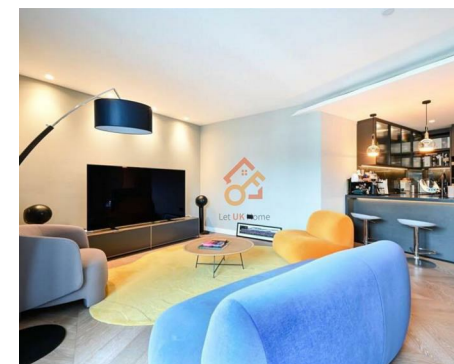
Let **UK** Home

2 Bedrooms

Flat

Located in London

£1,900,000



[info@letukhome.co.uk](mailto:info@letukhome.co.uk)

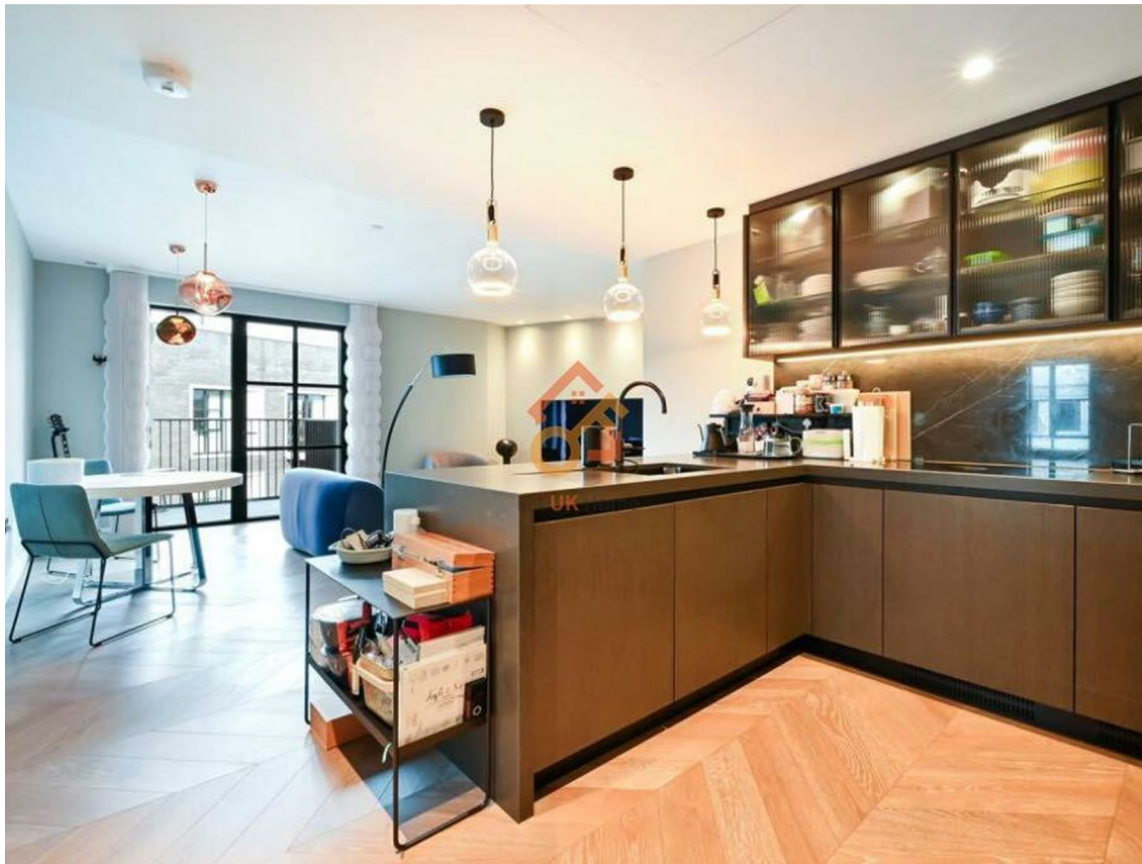
<https://www.letukhome.co.uk/>

01795 358 886



# Cleveland Street London

W1W 6UP



Let UK Home is delighted to offer this luxurious two-bedroom, two-bathroom apartment with a private balcony in the chic and contemporary new development, 101 on Cleveland, in the heart of Fitzrovia W1.

This bright 2-bedroom apartment spans 88 sq.m (947 sq.ft) with a well-balanced, family-friendly layout and two private balconies. The open-plan living/dining area (4.9m x 3.9m) connects seamlessly to a compact kitchen (3.5m x 3.5m), forming a warm social hub with direct access to a balcony for outdoor relaxation. The generous master bedroom (3.8m x 3.4m) features a dedicated dressing room and a private en-suite bathroom, offering a peaceful retreat with its own balcony access. A second double bedroom (4.0m x 3.3m) is served by a well-appointed family bathroom, ensuring convenience and privacy for all residents. This property also comes with a parking space.

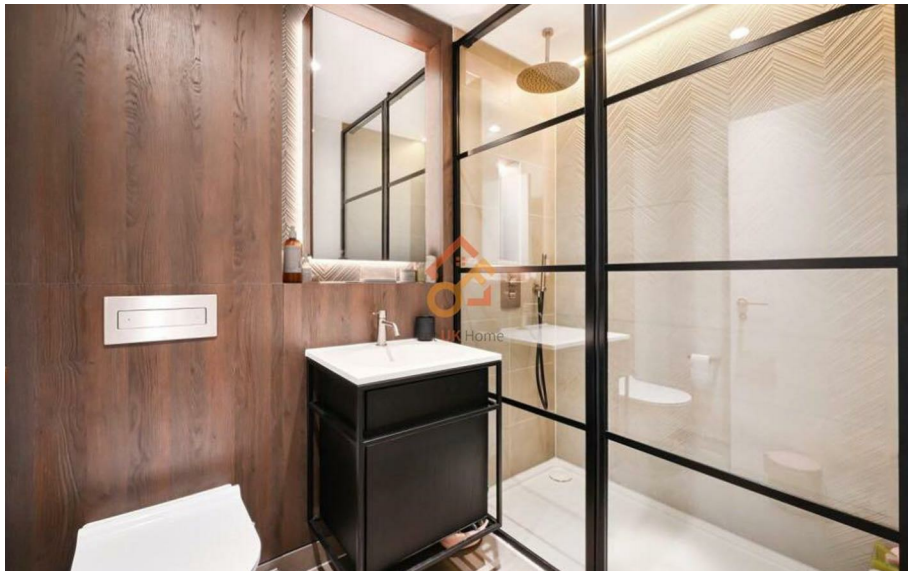
Residents of 101 on Cleveland will have access to the exclusive Club 101 amenities, including a concierge, residents' lounge, screening room, private dining room and bar, business suite, gym, and wellness suite with a steam room and sauna. The development also features beautifully courtyards, providing a serene escape from the urban bustle.

Located in one of London's most sought-after neighborhoods, residents of 101 on Cleveland enjoy unparalleled access to an array of amenities, including trendy cafes, gourmet restaurants, boutique shops, and cultural attractions. Only a short walk from Regents Park, the restaurants, shopping and theatres of the west end and the world renowned educational hub of Bloomsbury. 101 on Cleveland is within

# Cleveland Street London

£1,900,000 Leasehold

- 3rd Floor
- 24h Security
- Residents Lounge
- Sauna & Steam Room
- Concierge Service
- The Gym
- Cinema & Game Room
- Parking Space





Let **UK** Home

3F 2 Eastbourne Terrace  
Paddington  
London  
W2 6LG

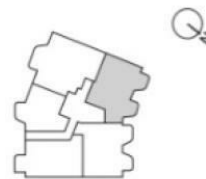
01795 358 886

info@letukhome.co.uk



**TYPICAL AREA**  
**88 SQ M / 947 SQ FT**

Living / Dining	4.9 X 3.9m / 16'3" X 12'9"
Kitchen	3.5 X 3.5m / 11'7" X 11'5"
Master Bedroom	3.8 X 3.4m / 12'4" X 11'1"
Dressing Room	2.4 X 2.2m / 7'9" / 7'2"
Master En Suite	2.9 X 2.4m / 9'5" X 8'0"
Bedroom 2	4.0 X 3.3m / 13'2" X 11'0"
Bathroom	2.4 X 1.5m / 7'9" X 5'1"



### Council Tax Band:

### Local Authority:

Agents Note: Whilst every care has been taken to prepare these particulars, they are for guidance purposes only. All measurements are approximate and are for general guidance purposes only and whilst every care has been taken to ensure their accuracy, they should not be relied upon and potential buyers/tenants are advised to recheck the measurements.

Energy Efficiency Rating		Current	Potential
Very energy efficient - lower running costs			
(92 plus) <b>A</b>			
(81-91) <b>B</b>			
(69-80) <b>C</b>			
(55-68) <b>D</b>			
(39-54) <b>E</b>			
(21-38) <b>F</b>			
(1-20) <b>G</b>			
Not energy efficient - higher running costs			
<b>England &amp; Wales</b>	EU Directive 2002/91/EC		

<https://www.letukhome.co.uk/>